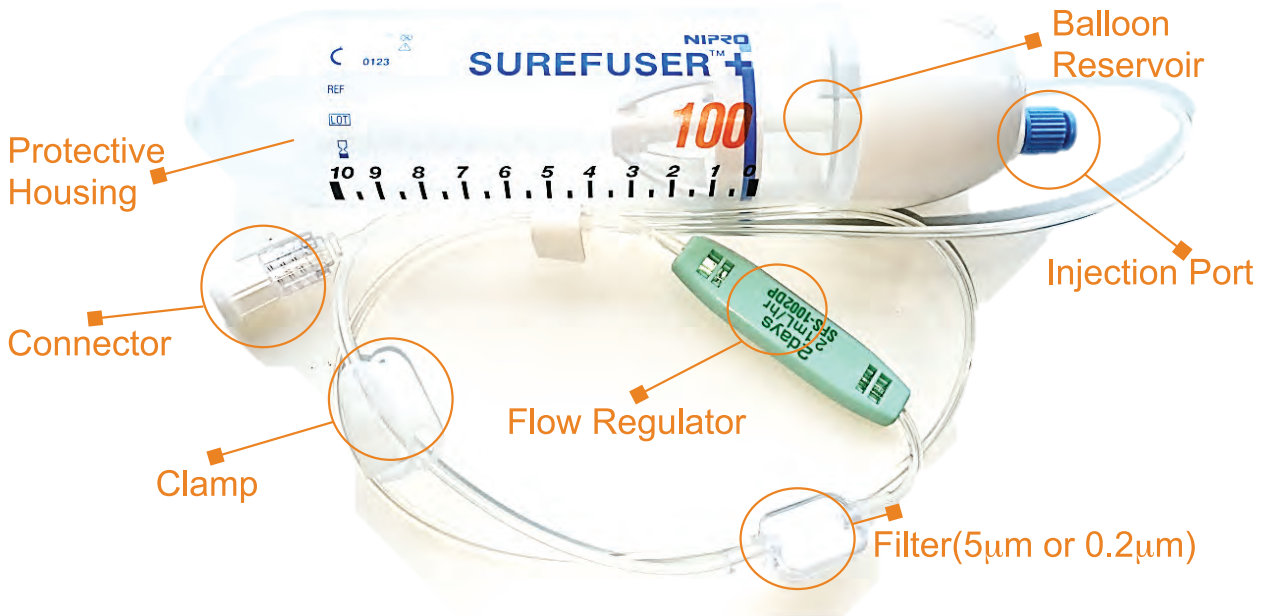




NIPRO

Your Partner in Health Care

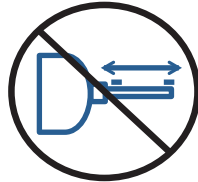
Feature of Surefuser™ +



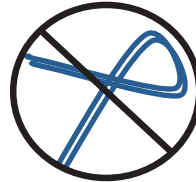
■ Caution for Surefuser™ +



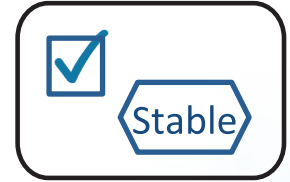
Single Use Only



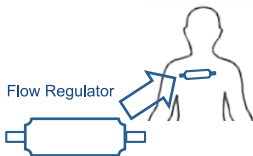
Do not pull excessively on the infusion line



No bends or twists in infusion line



Check drug stability before surefuser use



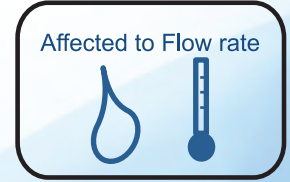
The flow regulator should be attached on the patient skin



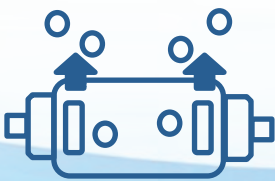
Do not use alcohol containing medication on the filter for disinfection



Do not use alcohol containing medication on the connecting parts



Viscosity & density of the medication, temperature, and arterial pressure are affected to flow rate



Air can be expelled by the filter



Oil-based medications, etoposide medications & fatty emulsion medications should NOT be used.

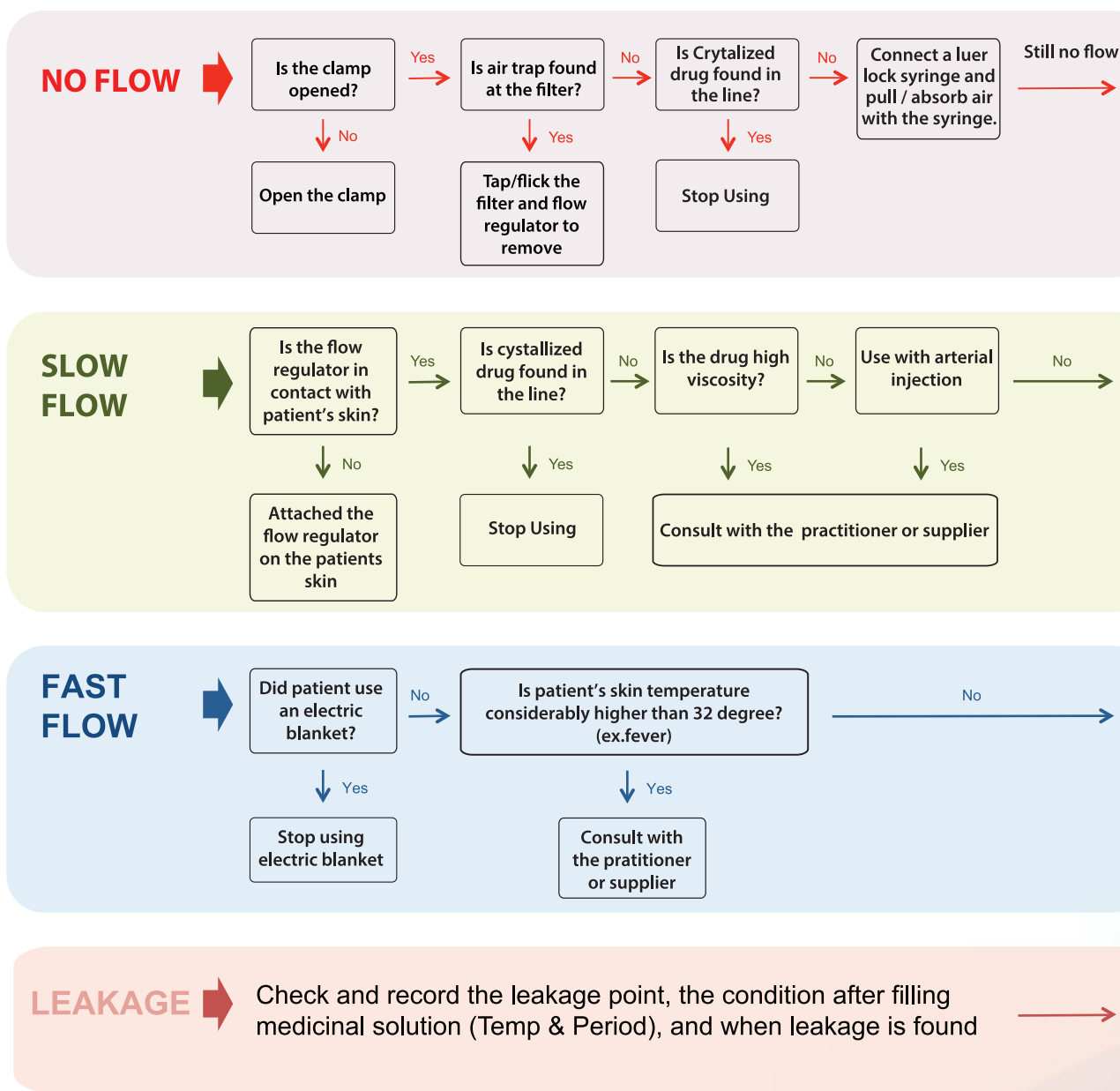


NIPRO

Your Partner in Health Care

Trouble Shooting of Surefuser™ +

For safety purpose, please check the flow just before administrating



Contact to the Supplier

*Please keep the actual sample for investigations

Slow flow: Although scheduled end time has past, there is considerable residual drug left in Surefuser™+
Fast flow: Drug solution has disappeared before scheduled end time



NIPRO

Your Partner in Health Care

NIPRO CORPORATION

3-9-3, Honjo-Nishi, Kita-ku, Osaka, 531-8510 Japan
Tel: +81-6-6372-2332 Fax: +81-6-6371-7422
<http://www.nipro.co.jp/>

NIPRO ASIA PTE LTD

8 Temasek Boulevard
#40-02 Suntec Tower 3
Singapore 038988
Tel: +65 6588 2281
Fax: +65 6588 2481
Email: niproasia@nipro.com.sg

NIPRO AUSTRALIA PTY LTD

Suite 2.02, Level 2, 657 Pacific Highway,
St Leonards NSW 2065, Australia
Tel: +61 2 9437 9000
Fax: +61 2 9437 0860

NIPRO MALAYSIA SDN BHD

L13-07, Level 13, PJX-HM Shah Tower,
No. 16A, Persiaran Barat, Petaling Jaya
4650 Selangor, Malaysia
Tel: +603 7932 1515
Fax: +603 7932 1717

